

June 14, 2021

Comox Valley Regional District
Board of Directors
Via email

Dear CVRD Chair and Directors,

I am responding on behalf of Mosaic to the recent letter sent to the Board from Area A Regional Director Daniel Arbour, and the associated Agenda Item H-1 on your upcoming June 15, 2021 meeting.

As noted in Director Arbour's letter, Mosaic is undertaking second-growth harvesting activities in an area of Union Bay/Langley Lake within its privately managed forest lands. This plan results from many years of collaborative work with the current water purveyors the Union Bay Improvement District (UBID). The harvesting was deferred for many years at the request of UBID staff to allow the new water treatment plant to add extra assurance that clean, safe drinking water could be provided to the citizens of Union Bay. This water treatment plant has been successfully operating since June 2020.

Mosaic has met annually with UBID staff for many years and has more recently met with CVRD staff to share our plans for this area, including a review of the watershed and the small harvest area in the field with CVRD staff. Specific to managing water quality, UBID and CVRD staff did not raise any concerns with our current plans.

Our Professional foresters, biologists and engineers have designed the area considering hydrology, fish, terrain, wildlife, recreation, and any input we received from UBID and CVRD staff from our reviews. We have had a qualified independent professional complete a whole Watershed Assessment for additional certainty in our watershed management plans. Mosaic has committed to following all assessment recommendations, which include strategies to ensure water quality is maintained at all times. In addition, we have shared information

NANAIMO OFFICE

Mosaic Forest Management

201-648 Terminal Ave.
Nanaimo, BC
Canada V9R 5E2

T 250.716.3700

F 250.716.3763

mosaicforests.com

related to our Watershed Assessment with the UBID, CVRD, Island Health, and the Ministry of Forests, Lands, Natural Resource Operations and Rural Development. Our operations follow specific prescriptions from this Watershed Assessment and associated Standard Operating Procedures created by the independent professional to maintain water quality. In addition, forest professionals manage active operations and monitor water quality before, during and after operations.

Mosaic identifies protecting water quality as a top priority in our forest lands' management practices and sustainability commitments. Managing drinking water sources is a key shared accountability between Mosaic and the UBID and CVRD water managers. Under legislation, we are responsible for ensuring forest practices do not negatively impact water quality in the drainages associated with a water licence. We make any necessary amendments to planned activities based on our consultation work with relevant authorities and communities.

For more information on our focus on watersheds, please visit <https://www.mosaicforests.com/watersheds>

Mosaic understands and appreciates the important role the CVRD is about to assume as the drinking water purveyor for the residents of Union Bay. We agree that providing clean, safe drinking water to the community is of utmost importance in the region and across our working landbase. To that end, we are focused on completing this plan in the dry summer months to ensure the risks to water are mitigated.

Mosaic values the long-standing collaborative relationship we have with the CVRD related to watershed management, including creating the Comox Lake Watershed Protection Plan and research initiatives like the new weather station installed on our lands in the Comox Watershed. We hope to extend this collaborative relationship to the management of the Langley Lake watershed and ask for the

opportunity to provide more information on this plan and our watershed management to the Board at its next available convenience. Attached is more information on our activities in the area and on our watershed management program.

Sincerely,



Molly Hudson, RPF, RPBio
Director, Sustainability


Encl:

Mosaic Watershed Fact Sheet

Mosaic Langley Lake Activities Fact Sheet

Community Drinking Watersheds

MARCH 2020

Timberland Manager for  **ISLAND**
TIMBERLANDS

Mosaic Forest Management identifies protecting water quality as a top priority in our management practices and sustainability commitments across our forest lands. In particular, several communities on Vancouver Island have licences to draw water from sources within our private managed forests, and protecting drinking water sources is a key shared accountability between Mosaic and community water managers.

WHAT IS A WATERSHED?

A watershed is any area of land that catches rain or snow and drains into a body of water. In this document, we are speaking specifically about community drinking watersheds, which are defined as the specific drainages that feed community water sources.

HOW IS DRINKING WATER REGULATED?

Drinking water in British Columbia is heavily regulated along the whole supply chain from source to tap. Water purveyors are responsible for delivering safe drinking water that meets the standards prescribed in the *Drinking Water Protection Act* and the *Drinking Water Protection Regulation*, as well as conditions of their operating permits. Regional Health Authorities are responsible for oversight to ensure compliance, and both the Health Authority and the water purveyors undertake extensive, mandated water testing and monitoring.

As a managed forest owner, Mosaic is prohibited from negatively impacting drinking water quality by the provisions of the *Private Managed Forest Land Act*. We also maintain formal relationships with licensed

DID YOU KNOW?



Management of drinking water quality and sources is **heavily regulated** in British Columbia.

Community drinking water sources can be located within **public** or **private** lands in B.C.



Mosaic maintains collaborative relationships with water purveyors with licences to draw water from within our lands. We partner and modify plans and practices based on risks and consultation with community water managers.

water purveyors, and share information on our planned activities. We are responsible for ensuring forest practices do not negatively impact water quality in the drainages associated with a water licence, and make any necessary amendments to planned activities based on our consultation work with relevant authorities and communities.

PRIVATE MANAGED FOREST LAND ACT:

“...a primary forest activity must not cause a material adverse effect on the quality of drinking water that may affect human health at the point of diversion of a drinking water intake.”

DID YOU KNOW?

As part of our collaboration with community water purveyors, **Mosaic provides a suite of services and benefits to water managers free of charge**, including fire protection, access and road maintenance, and security.



Mosaic's watershed management programs are **designed and implemented by qualified, registered professionals**, including hydrologists, biologists and foresters.



TOGETHER WITH COMMUNITY WATER MANAGERS, Mosaic hosts dozens of watershed tours each year, where members of the public can learn about management of water resources and sustainable forestry.



MOSAIC AND THE REGIONAL DISTRICT OF NANAIMO worked together to produce a video that details our collaborative partnership on water management, which can be viewed at www.MosaicForests.com/watersheds.

COMMUNITY BENEFITS

When managed appropriately and to high standards, locating community drinking watersheds within managed forest lands creates cost savings and management benefits for communities.

Mosaic's work with drinking water managers allows:

- Communities to benefit from our forest professionals' expertise in managing the resource and providing important watershed data through partnerships with indigenous, local and provincial governments.
- In addition, water resource managers from the community have both road infrastructure and access provided and maintained through our operations, yielding significant annual cost savings to taxpayers.
- We also employ access control and security throughout our private managed forest lands, which greatly reduces the risk of human-caused wildfire or unwanted and unmonitored access to water intakes and other sensitive areas.
- Our extensive resources in wildfire response provide a rapid, first-line of defense against wildfire, the impacts of which can be catastrophic for surface water resources.

Mosaic is proud of the collaborative management programs we deliver with our community partners. More information on watershed management, including links to relevant regulations and information on water purveyors and their management plans and testing, can be found at www.MosaicForests.com/watersheds.

SUSTAINABLE FOREST MANAGEMENT IN WATERSHEDS

» **MOSAIC EMPLOYS SPECIALIZED, MODIFIED MANAGEMENT PRACTICES** within drinking watersheds, informed by detailed scientific analysis and monitoring.

» **WE HAVE CONDUCTED** high resolution laser imaging across our land base that allows us to generate detailed geo-referenced topographical maps, surface water flows, geological features, and forest canopy definition down to the single tree.

» **WE UNDERTAKE WATERSHED AND TERRAIN ASSESSMENTS** and deploy a continual water quality monitoring program.

» **ANY HARVEST AREAS ARE CAREFULLY DESIGNED** based on detailed technical data and reviewed with community water purveyors in advance.



Keep up to date on our latest by following [MosaicForests](#) on Facebook or [@MosaicForests](#) on Twitter

MOSAIC
FOREST MANAGEMENT

Union Bay/Langley Lake Forestry Activities

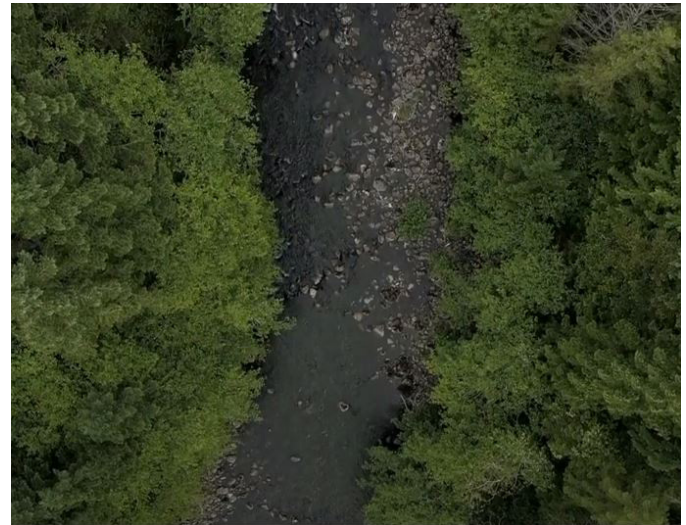
In June 2021, Mosaic Forest Management will commence second-growth harvesting operations in the Union Bay/Langley Lake watershed area. To that end, we want to ensure the public understands our work in the area and how we collaborate with the relevant water purveyors: Union Bay Improvement District (UBID) and Comox Valley Regional District (CVRD).

FOREST MANAGEMENT

The scheduled harvesting activities will take place entirely within Mosaic's private managed forest lands. These lands are subject to Provincial and Federal legislation, including the Fisheries Act, Water Sustainability Act, Wildfire Act, Drinking Water Protection Act, and Private Managed Forest Land Act. Further, Mosaic subscribes to voluntary third party Certification programs, including the Sustainable Forestry Initiative, Progressive Aboriginal Relations and the Program for the Endorsement of Forest Certification. Our lands are managed by Professional foresters, biologists, and engineers among others, and we are audited by third party groups annually.

To ensure proper watershed management, we have had a qualified independent professional complete a whole Watershed Assessment. Mosaic has committed to following all assessment recommendations which include strategies to ensure water quality is protected. In addition, we have shared information related to our Watershed Assessment with the UBID, CVRD, Island Health, and the Ministry of Forests, Lands, Natural Resource Operations and Rural Development.

We have made extra efforts above and beyond the requirements of legislation to have Standard Operating Procedures created for the area by an independent professional to guide our operational activities.



DID YOU KNOW?

UBID manages the water license for the area, and this responsibility will transfer to the CVRD in July 2021. In partnership with Mosaic Forest Management, the watershed is monitored for activity and any changes to water quality and quantity. In addition, the **new treatment system that become operational in June 2020** is monitoring 24/7 for all processes, functions and water quality parameters.

MOSAIC FOREST MANAGEMENT, WATER PURVEYORS AND LOCAL GOVERNMENT

Mosaic Forest Management identifies protecting water quality as a top priority in our management practices and sustainability commitments across our forest lands. Protecting drinking water sources is a key shared accountability between Mosaic and the UBID and CVRD water managers. Under legislation, we are responsible for ensuring forest practices do not negatively impact water quality in the drainages associated with a water licence, and we plan our activities in consultation with relevant authorities and communities.

We work with, discuss and share our operational plans on an annual basis with local purveyors including the UBID and CVRD and have made revisions to our original plans for this area based on input from the UBID water purveyors. Local elected officials have also been engaged regarding our watershed management and upcoming plans.

For more information on our focus on watersheds, please visit <https://www.mosaicforests.com/watersheds>

SCHEDULED ACTIVITIES

Harvesting activities will begin during June 2021. Road construction is not required with these planned activities. Hauling will not occur in the vicinity of Langley Lake and is scheduled for the summer months.

The harvest area is comprised entirely of second growth forest. Our Professional foresters, biologists and engineers have designed the area taking into consideration hydrology, fish, terrain, wildlife and recreation values and more. The harvest area is composed of two small harvest units which include dispersed leave tree retention throughout and includes retention on the seasonal streams that exceed requirements under legislation. Operations will follow specific prescriptions from the Watershed Assessment and Standard Operating procedures to protect water quality.

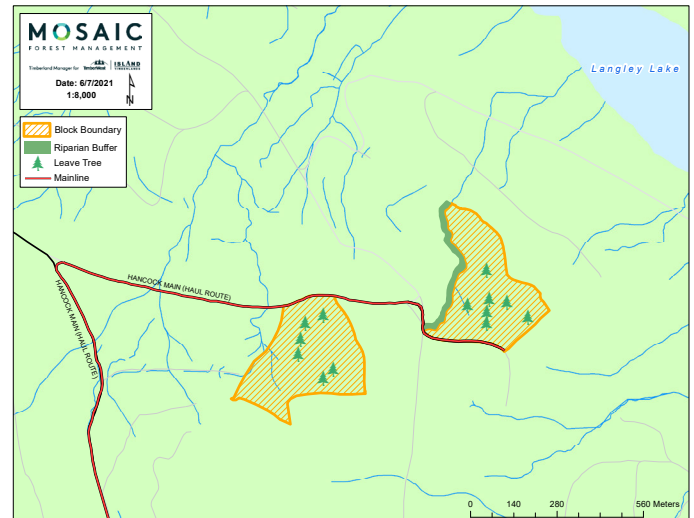
ACCESS

Mosaic has worked with the UBID to understand the local concerns including controlling access – this includes investing in technology related to smart gates along with managing other access control points in the area. Mosaic has invested in maintained existing roads to protect water quality and has removed illegally dumped garbage in the area. We continue to work with the UBID and CVRD to manage appropriate access in this area so that illegal activities, 4X4s and off-road vehicles do not impact the area.



MAP

We've attached an image below that shows haul routes and areas where harvesting will occur.



FOR MORE INFORMATION

If you have any questions please contact Colin Koszman, Land Use Forester at: (250) 468-6831.

MOSAIC
FOREST MANAGEMENT



Keep up to date on the latest Mosaic news by following @MosaicForests on Twitter, Facebook, Instagram and YouTube.